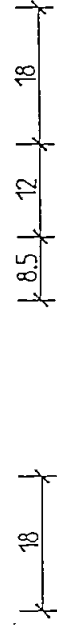


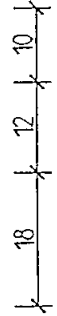
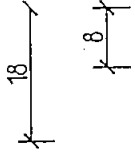
IV 68 Softline  
Eurofalz  
Vertikalschnitt



Glasfalzbelueftung

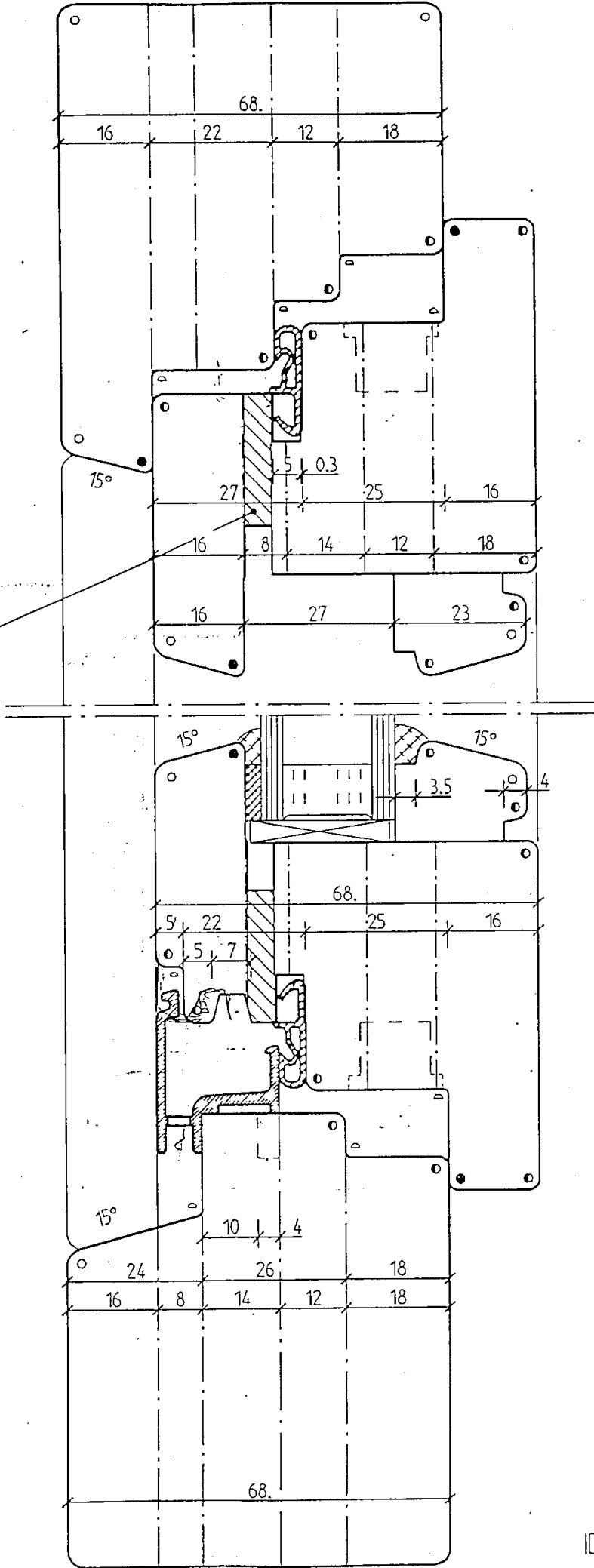


- Schiene ohne Steg:  
Gutmann NECKAR 22 S  
Bug TR 12.22 SK
- Schiene mit Steg:  
Gutmann NECKAR 22 F  
Bug R 12.22 T



Legende:

- R 3.0
- R 2.0
- R 1.5
- ◐ R 1.0



Ersatz f. gl.Nr. vom 30.04.96 god

30.04.96 HUM

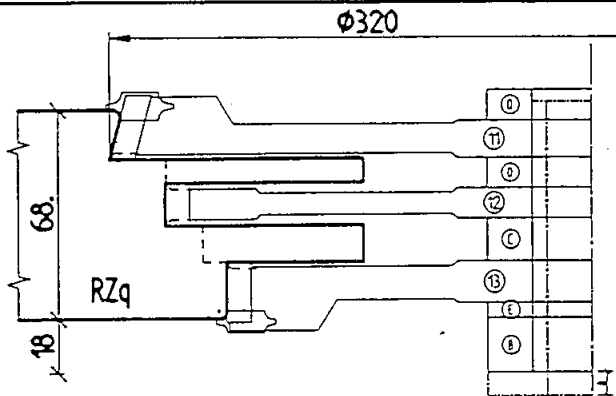
DS 110-0

IDN 161500952/1

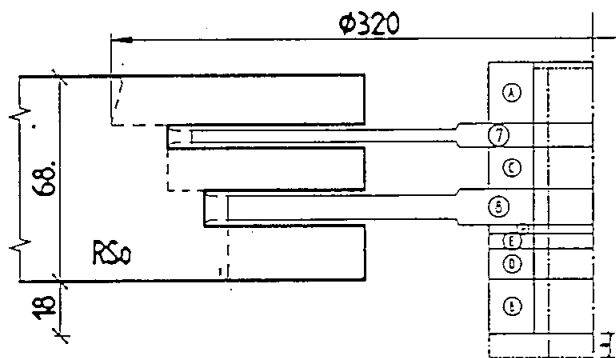
# MULTITOOLS - IV68 Holzfenster

Wepka - Ausführung

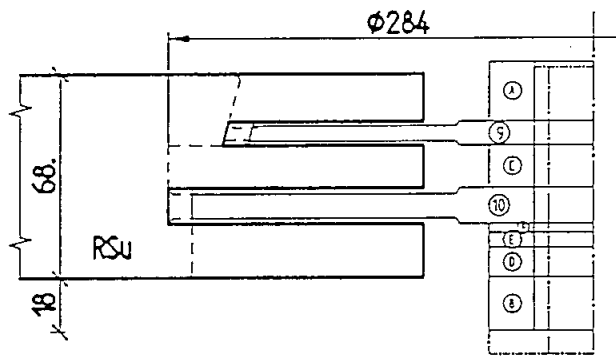
Schema - S+Z - Werkzeugaetze



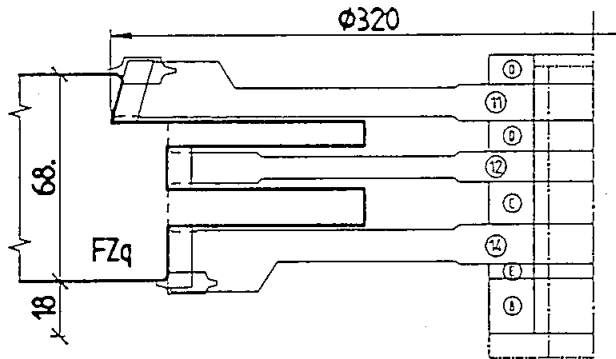
165007243



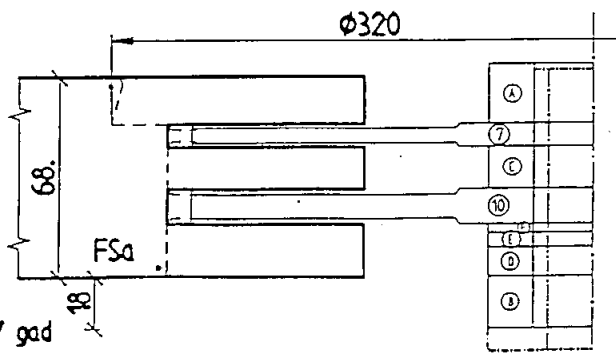
165007244



165007245



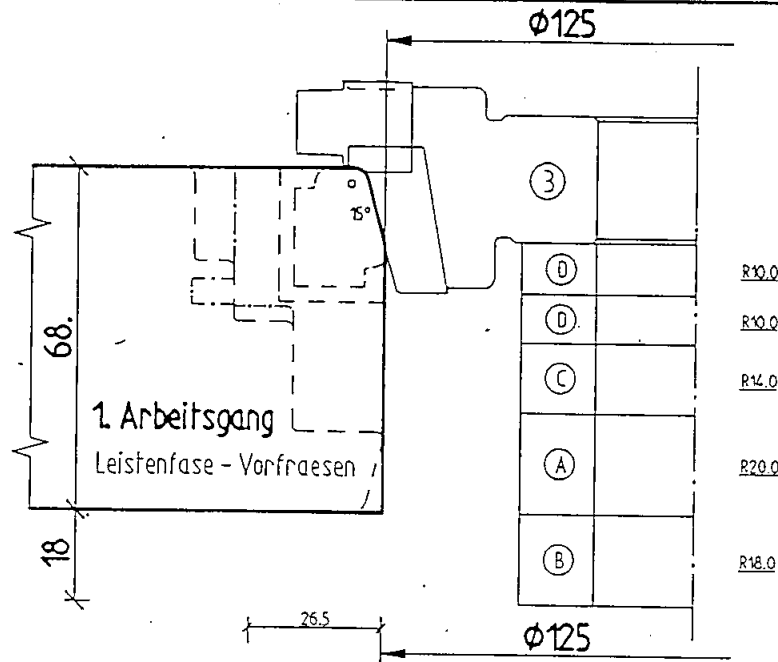
165007246



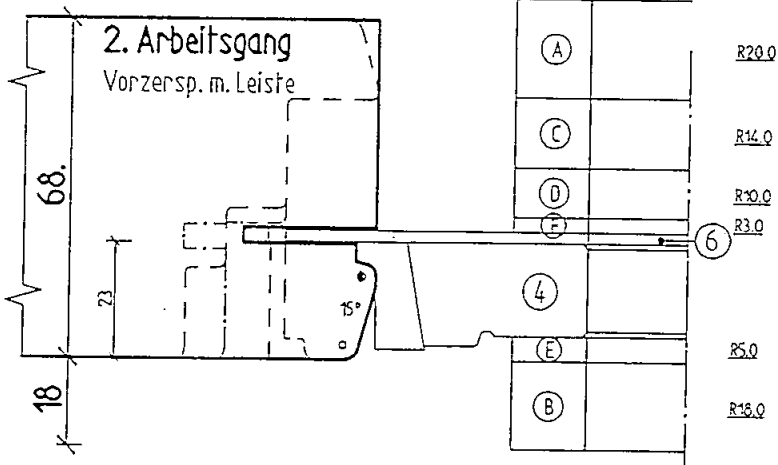
165007247

**MULTITOOLS - IV68 Holzfenster**  
**Schema - Laengs - Werkzeugsaeetze**

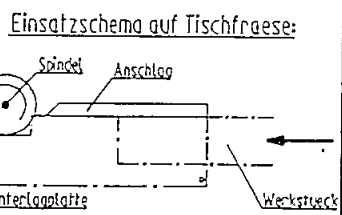
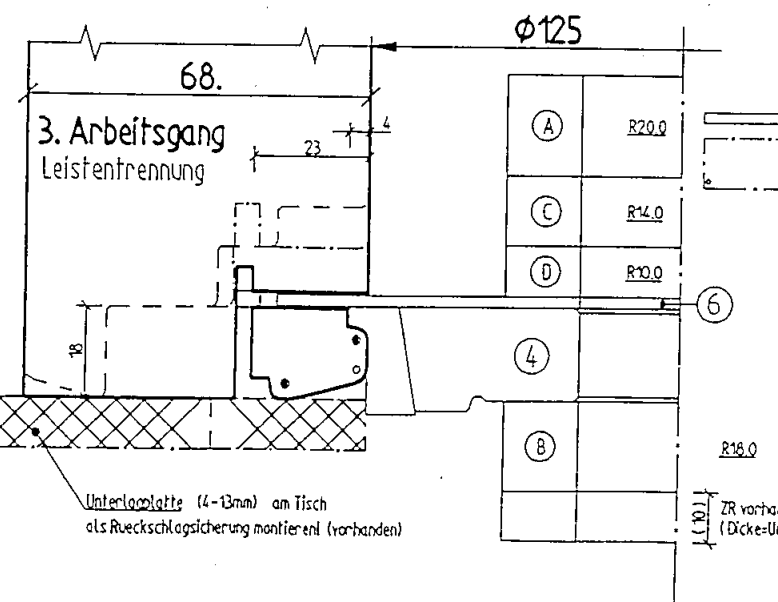
WepLa/Cut-Ausfuehrung  
 Leistenfertigung



165007248



165007249



165007250

Unterlaglattendicke  
 18  
 100  
 Unterlagplatte (4-13mm) am Tisch  
 als Rueckschlagsicherung montieren! (vorhanden)

ZR vorhanden  
 (Dicke=Unterlagplatte)

# MULTITOOLS - IV68 Holzfenster

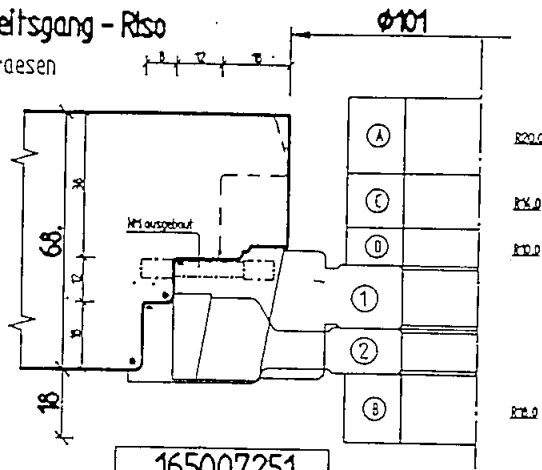
## Schema - Laengs - Werkzeugaetze

Wepa/Cut - Ausfuehrung  
Innenprofile



### 1. Arbeitsgang - Rts0

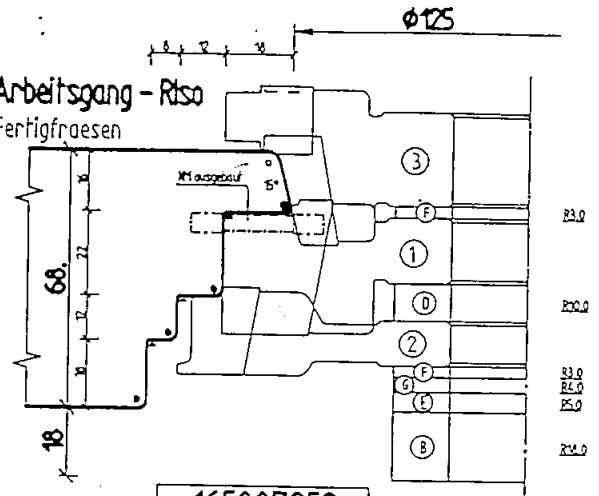
Vorfraesen



165007251

### 2. Arbeitsgang - Rts0

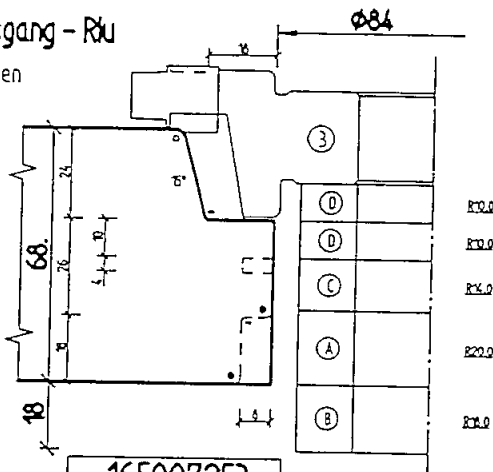
Fertigfraesen



165007252

### 1. Arbeitsgang - Rtu

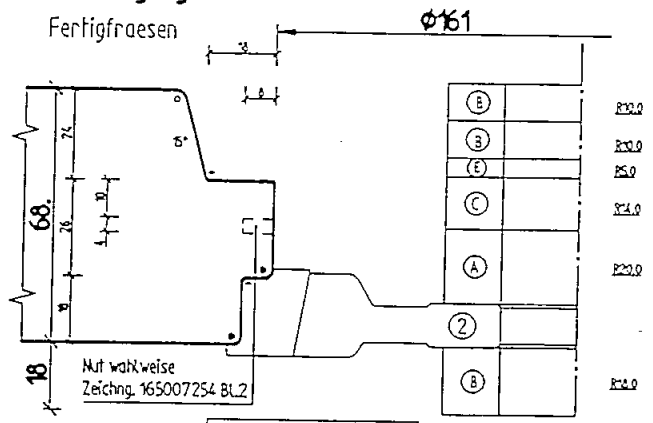
Vorfraesen



165007253

### 2. Arbeitsgang - Rtu

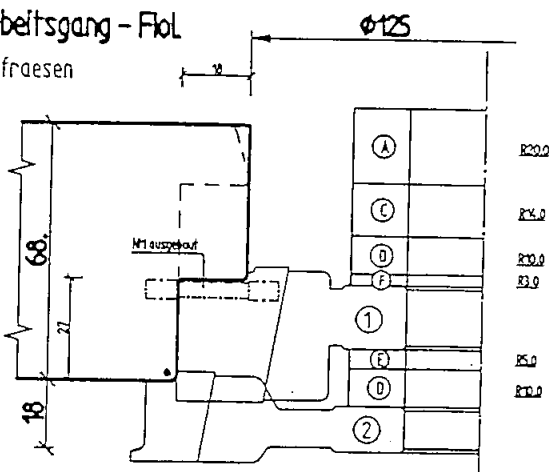
Fertigfraesen



165007254

### 1. Arbeitsgang - Flol

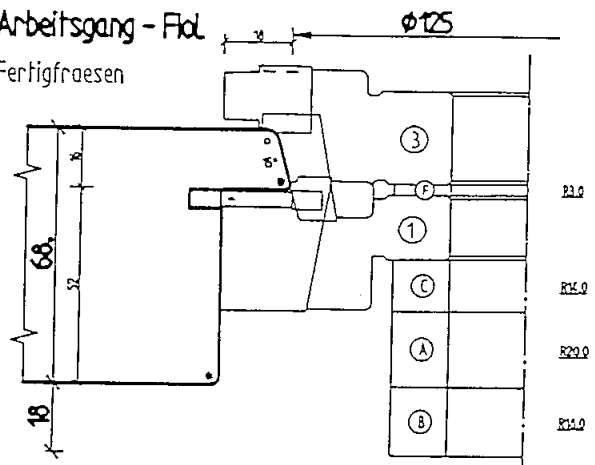
Vorfraesen



165007255

### 2. Arbeitsgang - Flol

Fertigfraesen



165007256

# MULTITOOLS - IV68 Holzfenster

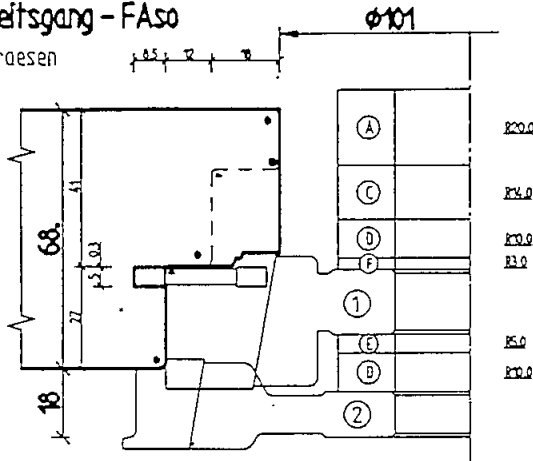
## Schema - Laengs - Werkzeugsaetze

WeplaCut - Ausfuehrung  
Aussenprofile



### 1. Arbeitsgang - FAso

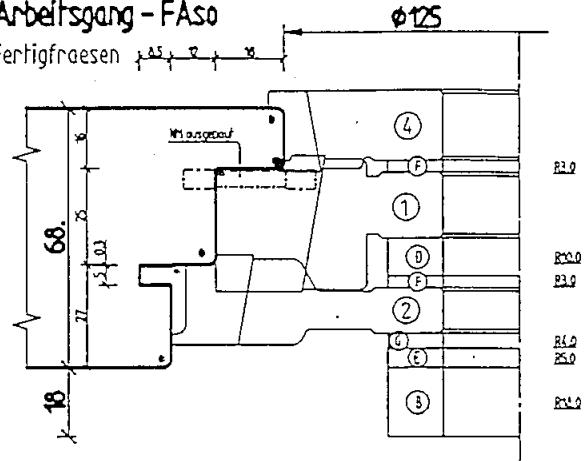
Vorfraesen



165007257

### 2. Arbeitsgang - FAso

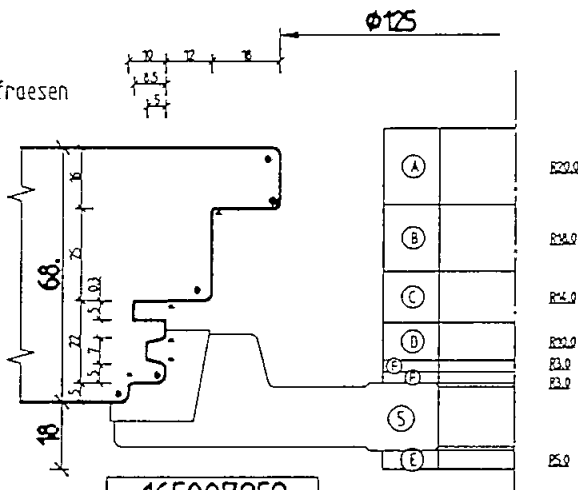
Fertigfraesen



165007258

### FAU

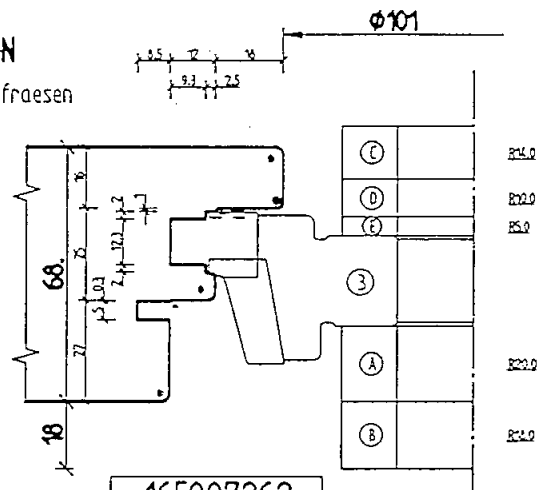
Nachfraesen



165007259

### GN-N

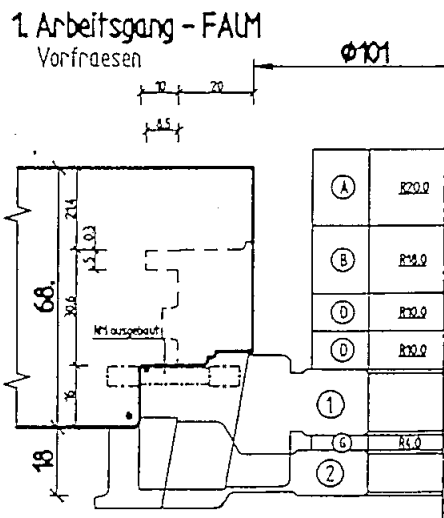
Nachfraesen



165007262

### 1. Arbeitsgang - FALM

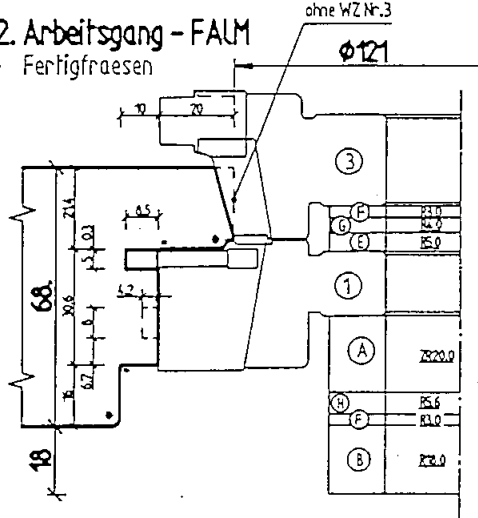
Vorfraesen



165007260

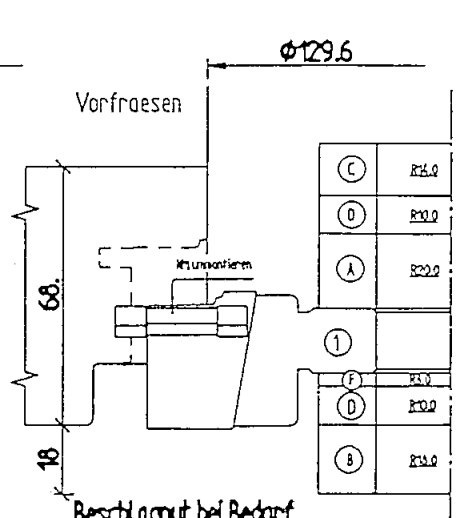
### 2. Arbeitsgang - FALM

Fertigfraesen



165007261

Vorfraesen



Beschlagnut bei Bedarf

165007261BL2